

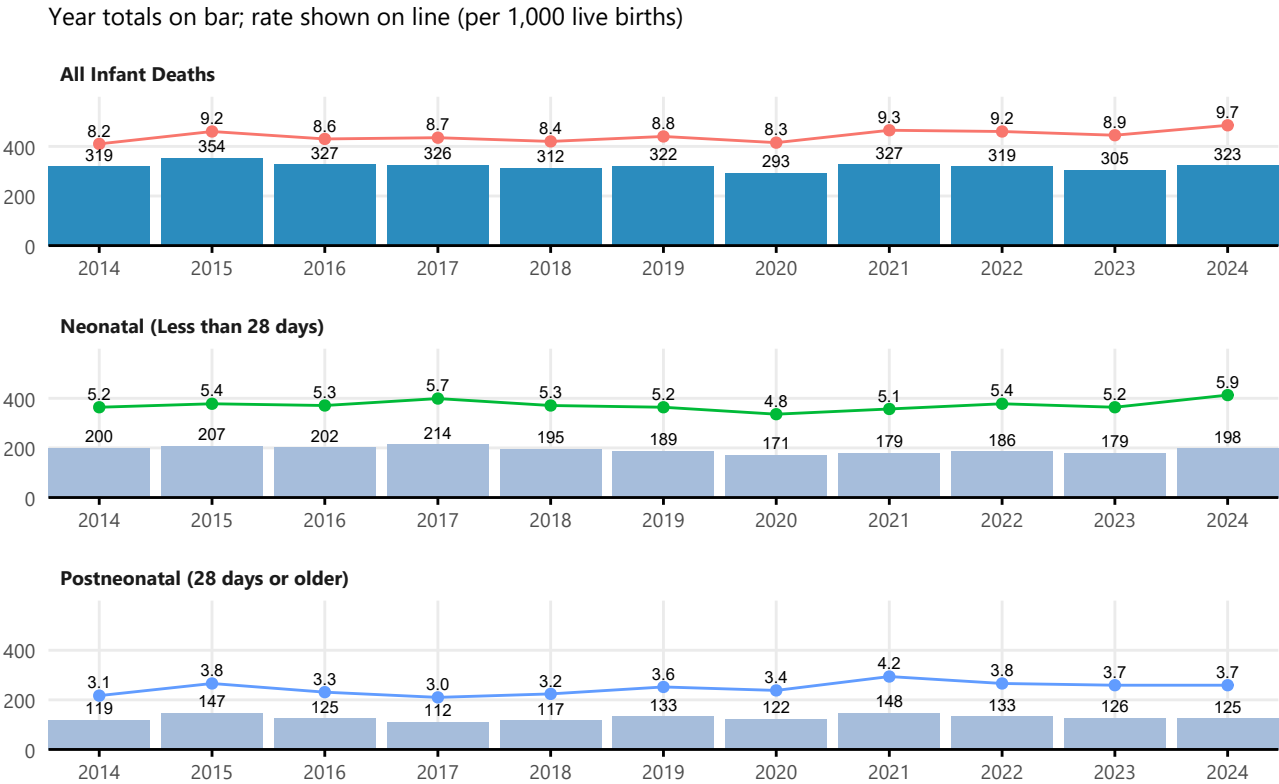
Infant Mortality, Mississippi 2014-2024

MSDH Office of Vital Records and Public Health Statistics, 8/21/2025



- Infant deaths include those occurring after live birth and within one year of life.
- Counts and corresponding rates for less than 20 events should be interpreted with caution.
- Counts may be incomplete and are subject to change.

Figure 1: Infant Mortality, Mississippi, 2014-2024



NOTE: Final counts may be incomplete and are subject to change

Table 1: Infant Deaths, 2014-2024

Year	All Infant Deaths			Neonatal (Less than 28 days)			Postneonatal (28 days or older)		
	Count	Rate	Rate, 3-yr avg.	Count	Rate	Rate, 3-yr avg.	Count	Rate	Rate, 3-yr avg.
2024	323	9.7	9.2	198	5.9	5.5	125	3.7	3.7
2023	305	8.9	9.1	179	5.2	5.2	126	3.7	3.9
2022	319	9.2	8.9	186	5.4	5.1	133	3.8	3.8
2021	327	9.3	8.8	179	5.1	5.0	148	4.2	3.8
2020	293	8.3	8.5	171	4.8	5.1	122	3.4	3.4
2019	322	8.8	8.6	189	5.2	5.4	133	3.6	3.3
2018	312	8.4	8.6	195	5.3	5.4	117	3.2	3.2
2017	326	8.7	8.9	214	5.7	5.5	112	3.0	3.4
2016	327	8.6	8.7	202	5.3	5.3	125	3.3	3.4
2015	354	9.2	–	207	5.4	–	147	3.8	–
2014	319	8.2	–	200	5.2	–	119	3.1	–

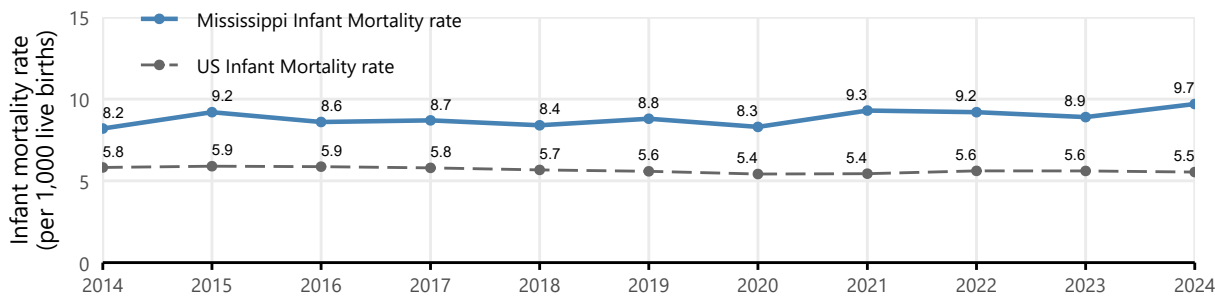
Note:

Rate calculated as infant deaths per 1,000 live births

3-year average rate calculated as total aggregate of listed year and previous two years

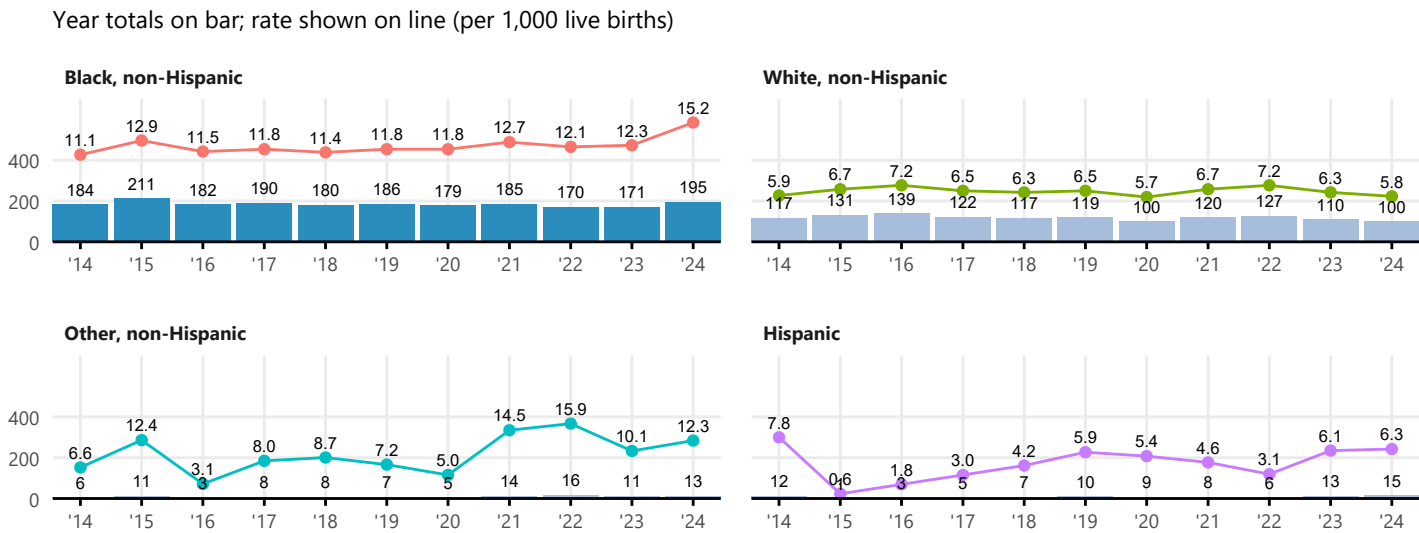
To compare Mississippi to the US, the infant mortality rate is shown below using NVSS data and comparable death certificate data from the Office of Vital Records and Public Health Statistics.

Figure 2: Comparing Mississippi and United States Infant Mortality, 2014-2024



SOURCES: CDC WONDER Provisional 2024 data; MSDH Office of Vital Records and Public Health Statistics

Figure 3: Infant Mortality by Race/Ethnicity, 2014-2024



NOTE: Case counts may be incomplete and are subject to change; Shaded region more likely to be incomplete.

Table 2: Infant Deaths by Race/Ethnicity, 2014-2024

Year	All race/ethnicities		Black, NH		White, NH		Other, NH		Hispanic	
	Count	Rate	Count	Rate	Count	Rate	Count	Rate	Count	Rate
2024	323	9.7	195	15.2	100	5.8	13	12.3	15	6.3
2023	305	8.9	171	12.3	110	6.3	11	10.1	13	6.1
2022	319	9.2	170	12.1	127	7.2	16	15.9	6	3.1
2021	327	9.3	185	12.7	120	6.7	14	14.5	8	4.6
2020	293	8.3	179	11.8	100	5.7	5	5.0	9	5.4
2019	322	8.8	186	11.8	119	6.5	7	7.2	10	5.9
2018	312	8.4	180	11.4	117	6.3	8	8.7	7	4.2
2017	326	8.7	190	11.8	122	6.5	8	8.0	5	3.0
2016	327	8.6	182	11.5	139	7.2	3	3.1	3	1.8
2015	354	9.2	211	12.9	131	6.7	11	12.4	1	0.6
2014	319	8.2	184	11.1	117	5.9	6	6.6	12	7.8

Note: Shaded colors correspond to race/ethnicity-specific rates higher than the yearly rate for all race/ethnicities; Counts and corresponding rates for an event size of less than 20 should be interpreted with caution; Rate calculated as infant deaths per 1,000 live births; For purposes of this report, records with an unknown ethnicity were included in the non-hispanic group

Table 3: Top 15 Leading Causes of Infant Deaths by Rankable 71 Causes of Infant Death, 2022-2024

Cause Group	All		Black, NH		White, NH		Other, NH		Hispanic	
	Count	Rate	Count	Rate	Count	Rate	Count	Rate	Count	Rate
Congenital malformations, deformations and chromosomal abnormalities	172	1.7	72	1.8	84	1.6	9	2.9	7	1.1
Disorders related to short gestation and low birth weight, not elsewhere classified	154	1.5	106	2.6	35	0.7	6	1.9	7	1.1
Unintentional injuries (accidents)	119	1.2	70	1.7	47	0.9	1	0.3	1	0.2
Sudden infant death syndrome	86	0.8	49	1.2	32	0.6	4	1.3	1	0.2
Newborn affected by maternal complications of pregnancy	31	0.3	19	0.5	10	0.2	0	0.0	2	0.3
Bacterial sepsis of newborn	25	0.2	14	0.3	5	0.1	3	1.0	3	0.5
Necrotizing enterocolitis of newborn	25	0.2	14	0.3	9	0.2	2	0.6	0	0.0
Diseases of the circulatory system	19	0.2	9	0.2	7	0.1	1	0.3	2	0.3
Respiratory distress of newborn	19	0.2	5	0.1	12	0.2	2	0.6	0	0.0
Newborn affected by complications of placenta, cord and membranes	17	0.2	10	0.2	7	0.1	0	0.0	0	0.0
Intrauterine hypoxia and birth asphyxia	15	0.1	7	0.2	7	0.1	0	0.0	1	0.2
Assault (homicide)	13	0.1	8	0.2	4	0.1	1	0.3	0	0.0
Neonatal hemorrhage	12	0.1	7	0.2	4	0.1	0	0.0	1	0.2
Atelectasis	11	0.1	7	0.2	1	0.0	0	0.0	3	0.5
All Other Causes	156	1.5	96	2.4	47	0.9	10	3.2	3	0.5

Note:

Cause groups based on the National Center for Health Statistics 71 rankable grouped infant mortality cause groupings;

Counts and corresponding rates for an event size of less than 20 should be interpreted with caution;

Rate calculated as infant deaths per 1,000 live births

Table 4: Causes of Infant Deaths by 130 NCHS Selected Cause Groupings, 2022-2024

Cause Group	All		Black, NH		White, NH		Other, NH		Hispanic	
	Count	Rate	Count	Rate	Count	Rate	Count	Rate	Count	Rate
Extremely low birth weight or extreme immaturity	129	1.3	89	2.2	30	0.6	4	1.3	6	0.9
Accidental suffocation and strangulation in bed	98	1.0	59	1.4	37	0.7	1	0.3	1	0.2
Sudden infant death syndrome	86	0.8	49	1.2	32	0.6	4	1.3	1	0.2
Other symptoms, signs and abnormal clinical and laboratory findings, not elsewhere classified	62	0.6	42	1.0	15	0.3	5	1.6	0	0.0
Other perinatal conditions	57	0.6	40	1.0	13	0.2	4	1.3	0	0.0
Congenital malformations of heart	35	0.3	15	0.4	18	0.3	2	0.6	0	0.0
Congenital malformations of genitourinary system	26	0.3	8	0.2	16	0.3	1	0.3	1	0.2
Edwards syndrome	25	0.2	9	0.2	13	0.2	2	0.6	1	0.2
Other low birth weight or preterm	25	0.2	17	0.4	5	0.1	2	0.6	1	0.2
Bacterial sepsis of newborn	25	0.2	14	0.3	5	0.1	3	1.0	3	0.5
Necrotizing enterocolitis of newborn	25	0.2	14	0.3	9	0.2	2	0.6	0	0.0
Respiratory distress of newborn	19	0.2	5	0.1	12	0.2	2	0.6	0	0.0
Congenital malformations and deformations of musculoskeletal system, limbs and integument	18	0.2	6	0.1	10	0.2	1	0.3	1	0.2
Newborn affected by premature rupture of membranes	18	0.2	10	0.2	8	0.2	0	0.0	0	0.0
Other congenital malformations and deformations	16	0.2	11	0.3	4	0.1	1	0.3	0	0.0

Note:

Cause groups based on the National Center for Health Statistics 130 infant mortality cause groupings;

Counts and corresponding rates for an event size of less than 20 should be interpreted with caution;

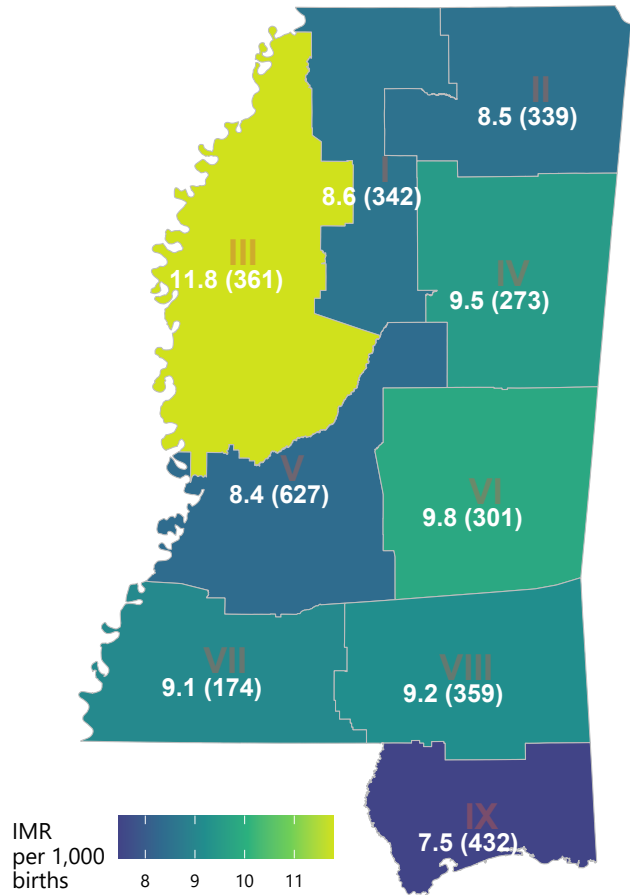
Rate calculated as infant deaths per 1,000 live births

Figure 4: Aggregate Infant Mortality by Public Health District

(a) Ten-Year Aggregate Infant Mortality Rate by Public Health District, 2015-2024

Ten-Year Aggregate Infant Mortality Rates by Public Health District, 2015-2024

Rate calculated as total infant deaths per 1,000 births;
Count shown in parenthesis

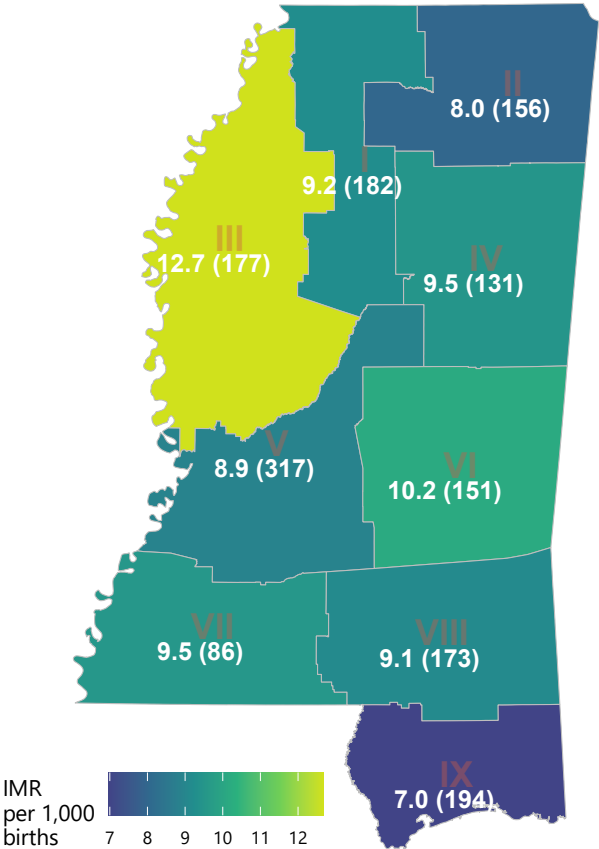


District layout follows 2024 administrative map

(b) Five-Year Aggregate Infant Mortality Rate by Public Health District, 2020-2024

Five-Year Aggregate Infant Mortality Rates by Public Health District, 2020-2024

Rate calculated as total infant deaths per 1,000 births;
Count shown in parenthesis

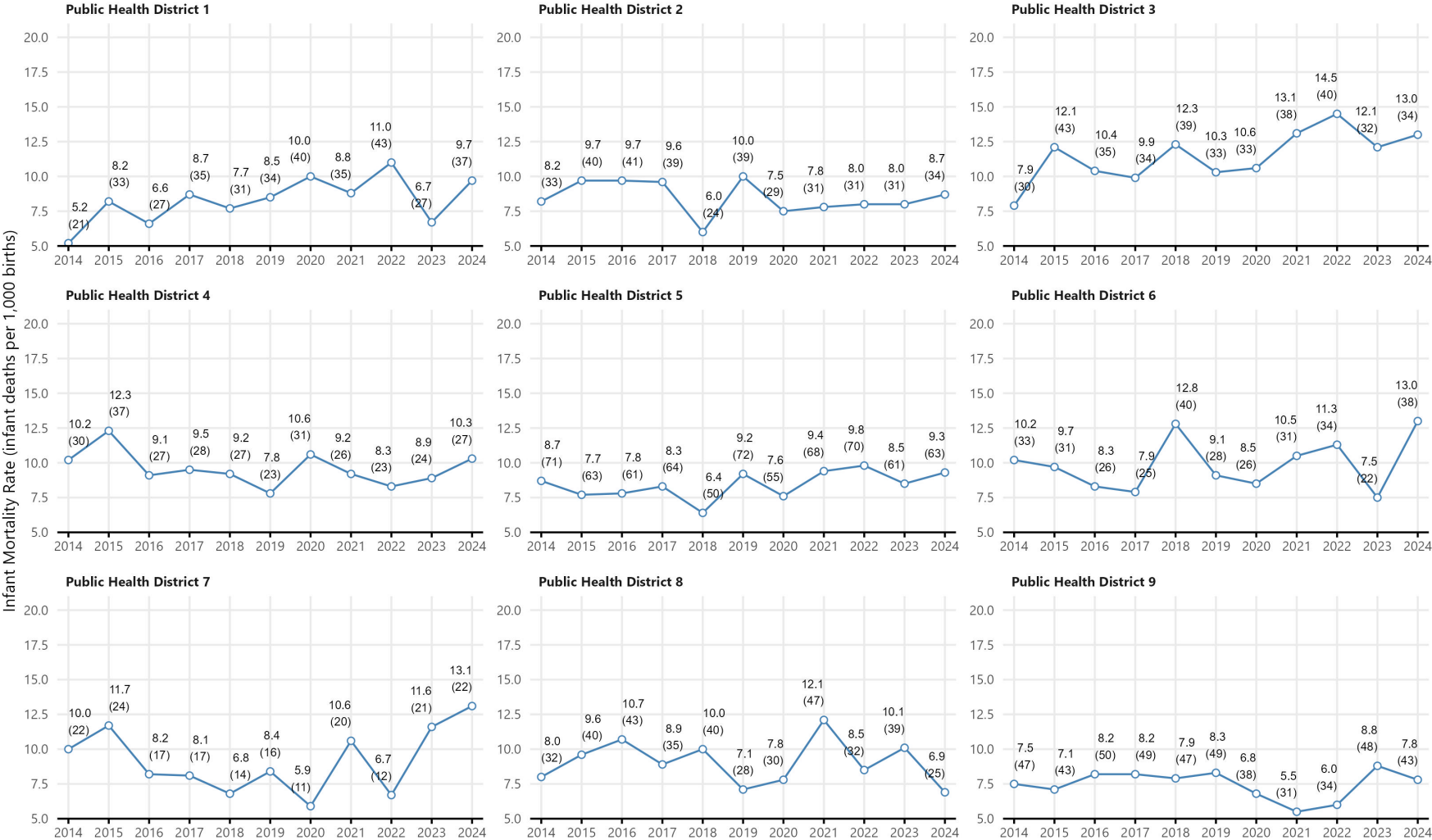


Rates with counts less than 20 should be interpreted with caution;
Counties with less than 5 counts have been suppressed (grey shade)
District layout follows 2024 administrative map

Figure 5: Infant mortality by Public Health District, 2014-2024

Mississippi Infant Mortality by Public Health District (2024 District layout)

Infant mortality rate calculated as infant deaths per 1,000 live births; counts in parentheses for years 2014-2024
Rates based on counts less than 20 should be treated with caution



NOTE: Provisional draft graphic; Case counts for 2024 may be incomplete and are subject to change.

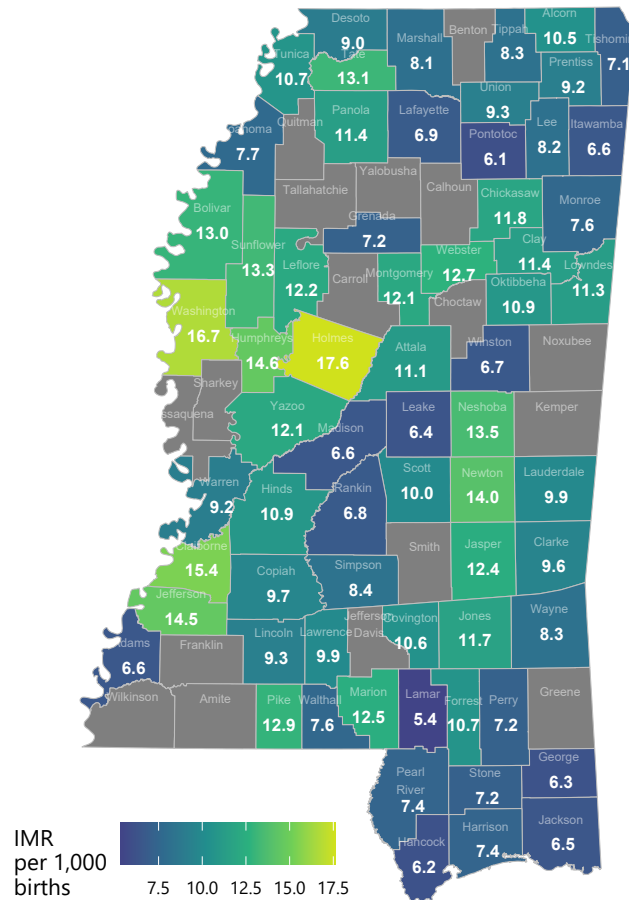
Figure 7: Five-Year Aggregate Infant Mortality by County, 2020-2024

(a) Infant mortality rate by county, 2020-2024

(b) Infant mortality counts by county, 2020-2024

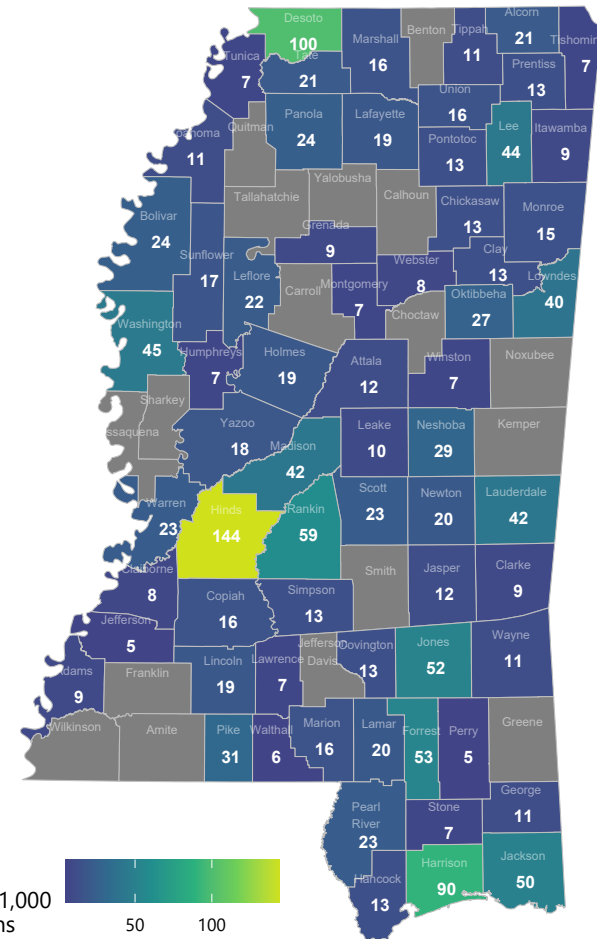
Five-Year Aggregate Infant Mortality Rates by County, 2020-2024

Rate calculated as total infant deaths per 1,000 births



Rates with counts less than 20 should be interpreted with caution;
Counties with less than 5 counts have been suppressed (grey shade)

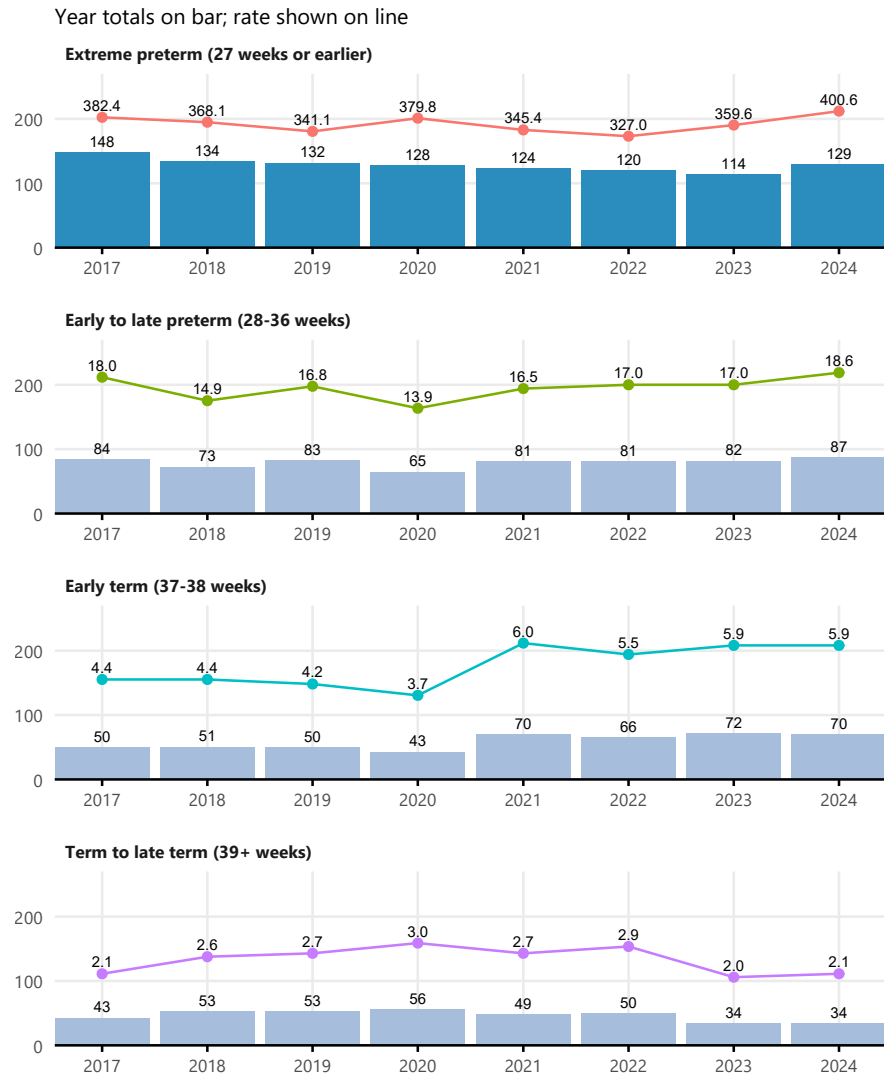
Five-Year Aggregate Infant Mortality Counts by County, 2020-2024



Counties with less than 5 counts have been suppressed (grey shade)

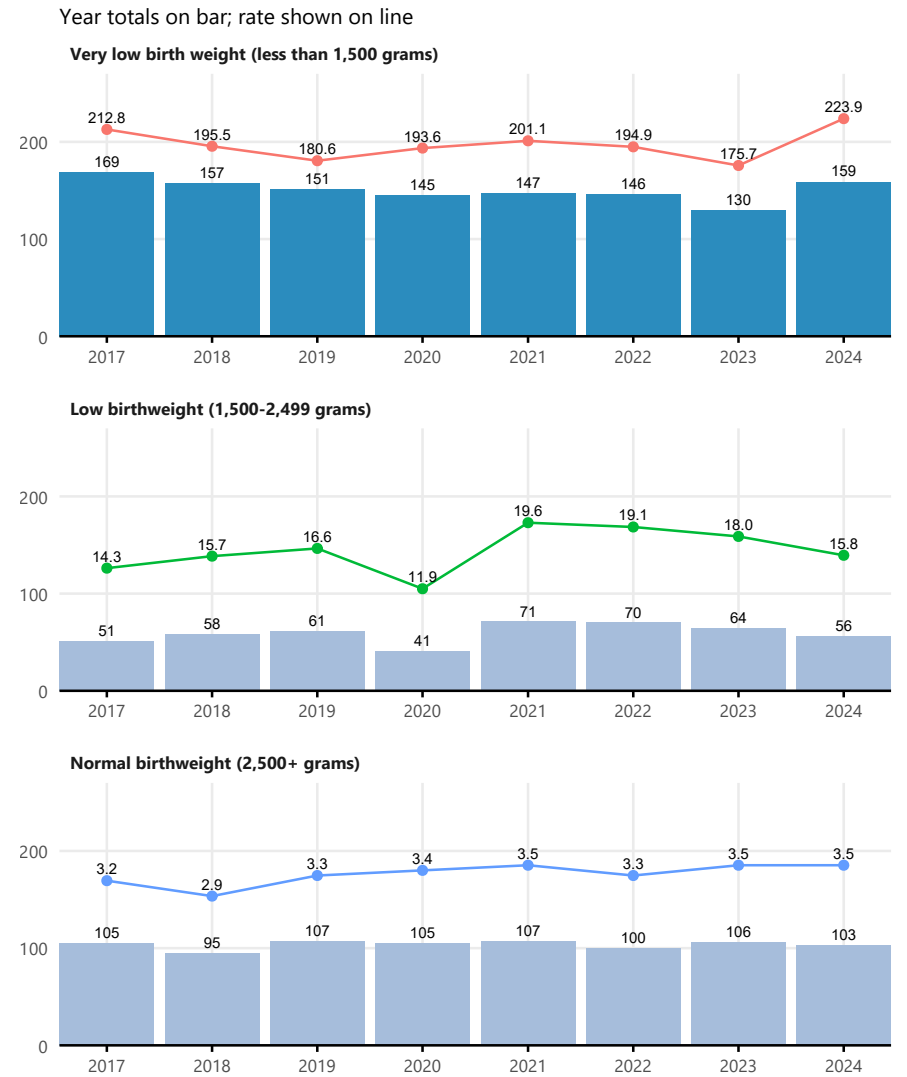
Figure 8: Infant mortality by gestational age and weight at birth, 2017-2024

(a) Infant mortality by gestational age at birth, 2017-2024



NOTE: Case counts may be incomplete and are subject to change; Shaded region more likely to be incomplete; MSDH Office of Vital Records; Rate calculated as infant deaths per 1,000 live births

(b) Infant mortality by gestational weight at birth, 2017-2024



NOTE: Case counts may be incomplete and are subject to change; Shaded region more likely to be incomplete; MSDH Office of Vital Records; Rate calculated as infant deaths per 1,000 live births

Sudden Unexpected Infant Deaths (SUID), 2015-2024

Table 5: Infant SUID deaths and infant mortality (IM) rates, 2015-2024 Mississippi resident deaths

	2024			2015-2024 Total		
	Count	IM rate	%	Count	IM rate	%
Total	73	2.2	100.0	759	2.1	100.0
Sex						
Female	30	1.8	41.1	318	1.8	41.9
Male	43	2.5	58.9	441	2.4	58.1
Race/ethnicity						
Black, non-Hispanic	45	3.5	61.6	429	2.9	56.5
White, non-Hispanic	24	1.4	32.9	294	1.6	38.7
Other, non-Hispanic	3	2.8	4.1	22	2.2	2.9
Hispanic	1	0.4	1.4	14	0.8	1.8
Cause group						
SIDS	23	0.7	31.5	239	0.7	31.5
ASSB	32	1.0	43.8	181	0.5	23.8
Unknown	18	0.5	24.7	339	0.9	44.7

Note:
Infant mortality (IM) rates calculated as per 1,000 births

Figure 9: SUID infant deaths by sex and race/ethnicity, Mississippi, 2015-2024

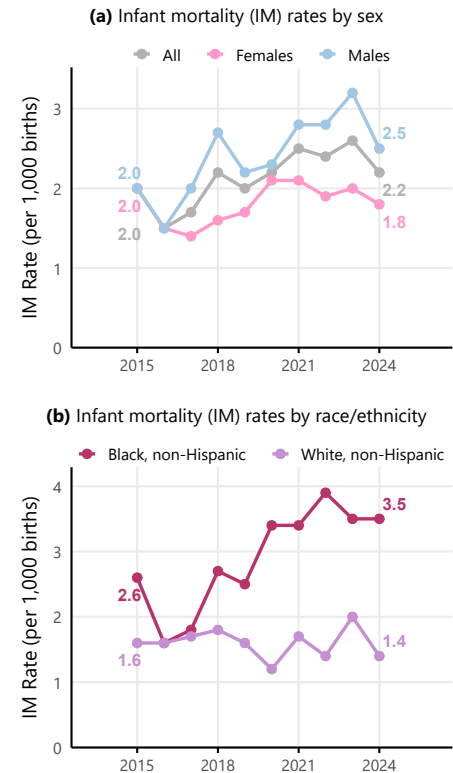
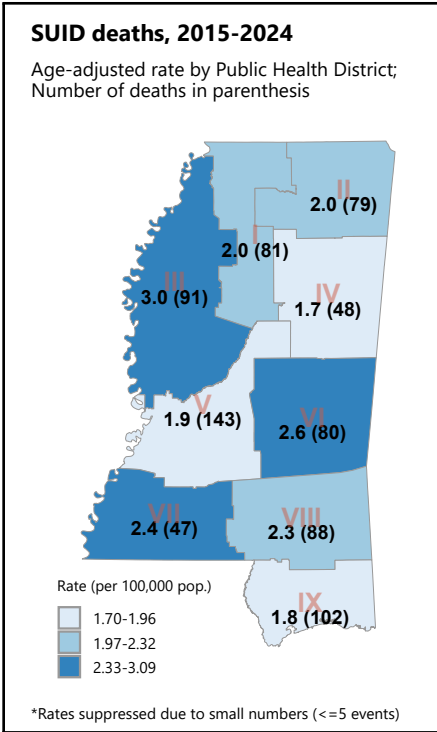


Figure 10: SUID infant deaths by Public Health District, 2015-2024



Gestational Age at Birth for All Infant Deaths

Table 6: Infant mortality by gestational age at birth, 2020-2024

Year	All			Black, NH			White, NH			Other, NH			Hispanic		
	Count	Rate	%	Count	Rate	%	Count	Rate	%	Count	Rate	%	Count	Rate	%
Extreme preterm (27 weeks or earlier)															
2024	129	400.6	39.9%	90	426.5	46.2%	28	301.1	28.0%	5	1,250.0	38.5%	6	428.6	40.0%
2023	114	359.6	37.4%	74	373.7	43.3%	30	312.5	27.3%	3	375.0	27.3%	7	466.7	53.8%
2022	120	327.0	37.6%	68	290.6	40.0%	44	392.9	34.6%	6	600.0	37.5%	2	181.8	33.3%
2021	124	345.4	37.9%	79	323.8	42.7%	38	391.8	31.7%	5	833.3	35.7%	2	166.7	25.0%
2020	128	379.8	43.7%	85	381.2	47.5%	37	370.0	37.0%	4	1,333.3	80.0%	2	181.8	22.2%
Early to late preterm (28-36 weeks)															
2024	87	18.6	26.9%	42	18.9	21.5%	32	15.5	32.0%	7	50.7	53.8%	6	23.5	40.0%
2023	82	17.0	26.9%	47	20.1	27.5%	30	14.1	27.3%	4	27.4	36.4%	1	4.5	7.7%
2022	81	17.0	25.4%	43	18.6	25.3%	33	15.4	26.0%	3	27.0	18.8%	2	10.3	33.3%
2021	81	16.5	24.8%	45	18.8	24.3%	32	14.5	26.7%	1	8.9	7.1%	3	16.1	37.5%
2020	65	13.9	22.2%	37	15.8	20.7%	25	12.3	25.0%	1	9.0	20.0%	2	10.1	22.2%
Early term (37-38 weeks)															
2024	70	5.9	21.7%	38	8.0	19.5%	30	5.0	30.0%	0	0.0	0.0%	2	2.5	13.3%
2023	72	5.9	23.6%	34	6.6	19.9%	32	5.4	29.1%	2	5.5	18.2%	4	5.5	30.8%
2022	66	5.5	20.7%	31	6.2	18.2%	32	5.3	25.2%	2	6.2	12.5%	1	1.5	16.7%
2021	70	6.0	21.4%	33	6.6	17.8%	26	4.5	21.7%	8	24.7	57.1%	3	5.2	37.5%
2020	43	3.7	14.7%	26	4.9	14.5%	15	2.7	15.0%	0	0.0	0.0%	2	4.1	22.2%
Term to late term (39+ weeks)															
2024	34	2.1	10.5%	23	4.1	11.8%	9	1.0	9.0%	1	1.8	7.7%	1	0.8	6.7%
2023	34	2.0	11.1%	14	2.3	8.2%	17	1.9	15.5%	2	3.5	18.2%	1	0.9	7.7%
2022	50	2.9	15.7%	26	4.0	15.3%	18	1.9	14.2%	5	8.8	31.2%	1	0.9	16.7%
2021	49	2.7	15.0%	27	3.9	14.6%	22	2.2	18.3%	0	0.0	0.0%	0	0.0	0.0%
2020	56	3.0	19.1%	30	4.1	16.8%	23	2.3	23.0%	0	0.0	0.0%	3	3.1	33.3%

Note:

Counts and corresponding rates for an event size of less than 20 should be interpreted with caution;

Rate calculated as infant deaths per 1,000 live births within each specified race and condition tabulation;

Percent (%) calculated as percentage of infant deaths within year

Gestational Weight at Birth for All Infant Deaths

Table 7: Infant mortality by gestational weight at birth, 2020-2024

Year	All			Black, NH			White, NH			Other, NH			Hispanic		
	Count	Rate	%	Count	Rate	%	Count	Rate	%	Count	Rate	%	Count	Rate	%
Very low birth weight (less than 1,500 grams)															
2024	159	223.9	49.2%	102	223.7	52.3%	41	194.3	41.0%	7	636.4	53.8%	9	281.2	60.0%
2023	130	175.7	42.6%	84	181.0	49.1%	36	162.9	32.7%	3	136.4	27.3%	7	218.8	53.8%
2022	146	194.9	45.8%	80	170.9	47.1%	56	224.0	44.1%	8	727.3	50.0%	2	100.0	33.3%
2021	147	201.1	45.0%	93	191.0	50.3%	47	218.6	39.2%	5	454.5	35.7%	2	111.1	25.0%
2020	145	193.6	49.5%	90	186.7	50.3%	48	206.0	48.0%	4	363.6	80.0%	3	130.4	33.3%
Intermediate Low Birthweight (1,500-2,499 grams)															
2024	56	15.8	17.3%	26	13.1	13.3%	22	17.1	22.0%	4	40.8	30.8%	4	22.2	26.7%
2023	64	18.0	21.0%	37	18.1	21.6%	21	16.4	19.1%	3	30.6	27.3%	3	22.2	23.1%
2022	70	19.1	21.9%	34	16.0	20.0%	31	23.3	24.4%	3	40.0	18.8%	2	15.7	33.3%
2021	71	19.6	21.7%	36	17.2	19.5%	28	21.0	23.3%	5	60.2	35.7%	2	19.6	25.0%
2020	41	11.9	14.0%	24	11.9	13.4%	14	11.2	14.0%	1	11.6	20.0%	2	19.6	22.2%
Normal birth weight (2,500+ grams)															
2024	103	3.5	31.9%	64	6.2	32.8%	35	2.2	35.0%	2	2.1	15.4%	2	0.9	13.3%
2023	106	3.5	34.8%	47	4.1	27.5%	51	3.2	46.4%	5	5.2	45.5%	3	1.5	23.1%
2022	100	3.3	31.3%	53	4.6	31.2%	40	2.5	31.5%	5	5.4	31.2%	2	1.1	33.3%

2021	107	3.5	32.7%	56	4.7	30.3%	43	2.6	35.8%	4	4.6	28.6%	4	2.4	50.0%
2020	105	3.4	35.8%	63	5.0	35.2%	38	2.3	38.0%	0	0.0	0.0%	4	2.6	44.4%

Note:

Counts and corresponding rates for an event size of less than 20 should be interpreted with caution;

Rate calculated as infant deaths per 1,000 live births within each specified race and condition tabulation

Percent (%) calculated as percentage of neonatal infant deaths within year

Infant Deaths with Selected Linked Maternal Morbidity Characteristics

Table 8: 2024 infant deaths with rates of selected maternal morbidity in infant mortality by race/ethnicity

Maternal Characteristic	All		Black, NH		White, NH		Other, NH		Hispanic	
	Count	Rate	Count	Rate	Count	Rate	Count	Rate	Count	Rate
Gestational Hypertension	42	11.3	25	17.1	14	7.0	3	30.6	0	0.0
Gestational Diabetes	10	5.3	4	6.6	4	3.8	0	0.0	2	15.6
Eclampsia	3	33.7	0	0.0	2	60.6	1	333.3	0	0.0
Obesity	165	12.0	104	16.4	45	7.1	8	23.8	8	10.2
Previous Preterm Delivery	24	13.4	16	17.7	7	9.3	1	27.0	0	0.0
Syphilis	8	19.9	7	24.4	1	10.1	0	0.0	0	0.0
Total Infant Deaths	323	9.7	195	15.2	100	5.8	13	12.3	15	6.3

Note:

Counts and corresponding rates for an event size of less than 20 should be interpreted with caution;

Rate calculated as infant deaths per 1,000 live births within each specified race and condition tabulation

Table 9: 2024 infant deaths with percentages (%) of selected maternal morbidity in infant mortality by race/ethnicity

Maternal Characteristic	All		Black, NH		White, NH		Other, NH		Hispanic	
	Count	%	Count	%	Count	%	Count	%	Count	%
Gestational Hypertension	42	13.0%	25	12.8%	14	14.0%	3	23.1%	0	0.0%
Gestational Diabetes	10	3.1%	4	2.1%	4	4.0%	0	0.0%	2	13.3%
Eclampsia	3	0.9%	0	0.0%	2	2.0%	1	7.7%	0	0.0%
Obesity	165	51.1%	104	53.3%	45	45.0%	8	61.5%	8	53.3%
Previous Preterm Delivery	24	7.4%	16	8.2%	7	7.0%	1	7.7%	0	0.0%
Syphilis	8	2.5%	7	3.6%	1	1.0%	0	0.0%	0	0.0%
Total Infant Deaths	323	100.0%	195	100.0%	100	100.0%	13	100.0%	15	100.0%

Note:

Counts and corresponding rates for an event size of less than 20 should be interpreted with caution

Table 10: Infant mortality by selected maternal morbidity characteristic at birth, 2020-2024

Year	All			Black, NH			White, NH			Other, NH			Hispanic		
	Count	Rate	%	Count	Rate	%	Count	Rate	%	Count	Rate	%	Count	Rate	%
Gestational hypertension															
2024	42	11.3	13.0%	25	17.1	12.8%	14	7.0	14.0%	3	30.6	23.1%	0	0.0	0.0%
2023	42	12.0	13.8%	25	17.0	14.6%	16	8.9	14.5%	1	11.2	9.1%	0	0.0	0.0%
2022	42	12.0	13.2%	26	18.3	15.3%	16	8.6	12.6%	0	0.0	0.0%	0	0.0	0.0%
2021	37	10.3	11.3%	24	16.2	13.0%	10	5.2	8.3%	0	0.0	0.0%	3	25.6	37.5%
2020	31	9.8	10.6%	22	16.2	12.3%	8	4.9	8.0%	1	13.7	20.0%	0	0.0	0.0%
Gestational diabetes															
2024	10	5.3	3.1%	4	6.6	2.1%	4	3.8	4.0%	0	0.0	0.0%	2	15.6	13.3%
2023	14	7.8	4.6%	7	12.3	4.1%	7	7.0	6.4%	0	0.0	0.0%	0	0.0	0.0%
2022	8	4.2	2.5%	3	4.8	1.8%	4	3.6	3.1%	1	11.9	6.2%	0	0.0	0.0%
2021	8	4.2	2.4%	4	6.3	2.2%	4	3.8	3.3%	0	0.0	0.0%	0	0.0	0.0%
2020	9	5.4	3.1%	8	13.7	4.5%	1	1.1	1.0%	0	0.0	0.0%	0	0.0	0.0%
Eclampsia															

2024	3	33.7	0.9%	0	0.0	0.0%	2	60.6	2.0%	1	333.3	7.7%	0	0.0	0.0%
2023	3	33.0	1.0%	2	40.0	1.2%	1	28.6	0.9%	0	0.0	0.0%	0	0.0	0.0%
2022	1	12.0	0.3%	0	0.0	0.0%	1	25.0	0.8%	0	0.0	0.0%	0	0.0	0.0%
2021	2	31.7	0.6%	2	55.6	1.1%	0	0.0	0.0%	0	0.0	0.0%	0	0.0	0.0%
2020	2	21.3	0.7%	1	21.7	0.6%	1	22.7	1.0%	0	0.0	0.0%	0	0.0	0.0%
Obesity															
2024	165	12.0	51.1%	104	16.4	53.3%	45	7.1	45.0%	8	23.8	61.5%	8	10.2	53.3%
2023	147	10.6	48.2%	89	13.2	52.0%	47	7.8	42.7%	6	17.8	54.5%	5	6.8	38.5%
2022	132	9.4	41.4%	82	12.2	48.2%	44	7.0	34.6%	5	14.7	31.2%	1	1.6	16.7%
2021	148	10.7	45.3%	97	14.1	52.4%	43	7.0	35.8%	6	20.5	42.9%	2	3.5	25.0%
2020	142	10.2	48.5%	96	13.6	53.6%	41	6.8	41.0%	2	6.9	40.0%	3	5.9	33.3%
Previous preterm delivery															
2024	24	13.4	7.4%	16	17.7	8.2%	7	9.3	7.0%	1	27.0	7.7%	0	0.0	0.0%
2023	28	19.6	9.2%	20	26.7	11.7%	7	12.3	6.4%	1	28.6	9.1%	0	0.0	0.0%
2022	33	22.2	10.3%	23	30.6	13.5%	7	11.1	5.5%	3	85.7	18.8%	0	0.0	0.0%
2021	40	25.9	12.2%	27	36.0	14.6%	10	14.5	8.3%	2	41.7	14.3%	1	17.2	12.5%
2020	16	10.2	5.5%	10	12.8	5.6%	5	7.3	5.0%	0	0.0	0.0%	1	14.5	11.1%
Syphilis															
2024	8	19.9	2.5%	7	24.4	3.6%	1	10.1	1.0%	0	0.0	0.0%	0	0.0	0.0%
2023	7	20.0	2.3%	5	20.3	2.9%	1	10.9	0.9%	1	166.7	9.1%	0	0.0	0.0%
2022	6	21.2	1.9%	3	15.1	1.8%	2	28.2	1.6%	1	166.7	6.2%	0	0.0	0.0%
2021	1	4.6	0.3%	1	6.1	0.5%	0	0.0	0.0%	0	0.0	0.0%	0	0.0	0.0%
2020	2	11.1	0.7%	1	7.6	0.6%	1	26.3	1.0%	0	0.0	0.0%	0	0.0	0.0%
Total Neonatal Infant Deaths															
2024	323	9.7	100.0%	195	15.2	100.0%	100	5.8	100.0%	13	12.3	100.0%	15	6.3	100.0%
2023	305	8.9	100.0%	171	12.3	100.0%	110	6.3	100.0%	11	10.1	100.0%	13	6.1	100.0%
2022	319	9.2	100.0%	170	12.1	100.0%	127	7.2	100.0%	16	15.9	100.0%	6	3.1	100.0%
2021	327	9.3	100.0%	185	12.7	100.0%	120	6.7	100.0%	14	14.5	100.0%	8	4.6	100.0%
2020	293	8.3	100.0%	179	11.8	100.0%	100	5.7	100.0%	5	5.0	100.0%	9	5.4	100.0%

Note:

Counts and corresponding rates for an event size of less than 20 should be interpreted with caution;
Rate calculated as infant deaths per 1,000 live births within each specified race and condition tabulation;
Percent (%) calculated as percentage of neonatal infant deaths within year

NEONATAL INFANT DEATHS

Gestational Age at Birth for Neonatal Infant Deaths

Table 11: Neonatal Infant Deaths by Gestational Age at Birth, 2020-2024

Year	All			Black, NH			White, NH			Other, NH			Hispanic		
	Count	Rate	%	Count	Rate	%	Count	Rate	%	Count	Rate	%	Count	Rate	%
Extreme preterm (27 weeks or earlier)															
2024	115	357.1	58.1%	81	383.9	69.2%	23	247.3	37.7%	5	1,250.0	62.5%	6	428.6	50.0%
2023	101	318.6	56.4%	69	348.5	66.3%	24	250.0	39.3%	3	375.0	60.0%	5	333.3	55.6%
2022	111	302.5	59.7%	62	265.0	66.0%	41	366.1	53.2%	6	600.0	54.5%	2	181.8	50.0%
2021	105	292.5	58.7%	64	262.3	67.4%	34	350.5	47.9%	5	833.3	55.6%	2	166.7	50.0%
2020	112	332.3	65.5%	73	327.4	71.6%	33	330.0	54.1%	4	1,333.3	100.0%	2	181.8	50.0%
Early to late preterm (28-36 weeks)															
2024	54	11.5	27.3%	23	10.3	19.7%	23	11.1	37.7%	3	21.7	37.5%	5	19.6	41.7%
2023	40	8.3	22.3%	18	7.7	17.3%	20	9.4	32.8%	1	6.8	20.0%	1	4.5	11.1%
2022	34	7.1	18.3%	14	6.1	14.9%	17	7.9	22.1%	2	18.0	18.2%	1	5.1	25.0%
2021	44	9.0	24.6%	19	8.0	20.0%	23	10.4	32.4%	1	8.9	11.1%	1	5.4	25.0%
2020	38	8.1	22.2%	20	8.5	19.6%	17	8.4	27.9%	0	0.0	0.0%	1	5.0	25.0%
Early term (37-38 weeks)															
2024	19	1.6	9.6%	8	1.7	6.8%	10	1.7	16.4%	0	0.0	0.0%	1	1.3	8.3%
2023	29	2.4	16.2%	14	2.7	13.5%	11	1.8	18.0%	1	2.7	20.0%	3	4.1	33.3%
2022	27	2.3	14.5%	10	2.0	10.6%	14	2.3	18.2%	2	6.2	18.2%	1	1.5	25.0%
2021	21	1.8	11.7%	8	1.6	8.4%	9	1.6	12.7%	3	9.3	33.3%	1	1.7	25.0%
2020	8	0.7	4.7%	4	0.8	3.9%	4	0.7	6.6%	0	0.0	0.0%	0	0.0	0.0%
Term to late term (39+ weeks)															
2024	8	0.5	4.0%	4	0.7	3.4%	4	0.4	6.6%	0	0.0	0.0%	0	0.0	0.0%
2023	7	0.4	3.9%	2	0.3	1.9%	5	0.5	8.2%	0	0.0	0.0%	0	0.0	0.0%
2022	14	0.8	7.5%	8	1.2	8.5%	5	0.5	6.5%	1	1.8	9.1%	0	0.0	0.0%
2021	8	0.4	4.5%	3	0.4	3.2%	5	0.5	7.0%	0	0.0	0.0%	0	0.0	0.0%
2020	13	0.7	7.6%	5	0.7	4.9%	7	0.7	11.5%	0	0.0	0.0%	1	1.0	25.0%

Note:

Counts and corresponding rates for an event size of less than 20 should be interpreted with caution;
Rate calculated as infant deaths per 1,000 live births within each specified race and condition tabulation;
Percent (%) calculated as percentage of neonatal infant deaths within year

Gestational Weight at Birth for Neonatal Infant Deaths

Table 12: Infant mortality by gestational weight at birth, 2020-2024

Year	All			Black, NH			White, NH			Other, NH			Hispanic		
	Count	Rate	%	Count	Rate	%	Count	Rate	%	Count	Rate	%	Count	Rate	%
Very low birth weight (less than 1,500 grams)															
2024	137	193.0	69.2%	88	193.0	75.2%	33	156.4	54.1%	7	636.4	87.5%	9	281.2	75.0%
2023	113	152.7	63.1%	75	161.6	72.1%	30	135.7	49.2%	3	136.4	60.0%	5	156.2	55.6%
2022	123	164.2	66.1%	67	143.2	71.3%	46	184.0	59.7%	8	727.3	72.7%	2	100.0	50.0%
2021	117	160.1	65.4%	71	145.8	74.7%	39	181.4	54.9%	5	454.5	55.6%	2	111.1	50.0%
2020	122	162.9	71.3%	75	155.6	73.5%	40	171.7	65.6%	4	363.6	100.0%	3	130.4	75.0%
Intermediate Low Birthweight (1,500-2,499 grams)															
2024	29	8.2	14.6%	11	5.5	9.4%	14	10.9	23.0%	1	10.2	12.5%	3	16.7	25.0%
2023	32	9.0	17.9%	12	5.9	11.5%	15	11.7	24.6%	2	20.4	40.0%	3	22.2	33.3%
2022	35	9.6	18.8%	12	5.6	12.8%	20	15.0	26.0%	2	26.7	18.2%	1	7.9	25.0%
2021	35	9.7	19.6%	11	5.2	11.6%	20	15.0	28.2%	3	36.1	33.3%	1	9.8	25.0%
2020	19	5.5	11.1%	10	5.0	9.8%	8	6.4	13.1%	0	0.0	0.0%	1	9.8	25.0%
Normal birth weight (2,500+ grams)															
2024	27	0.9	13.6%	15	1.4	12.8%	12	0.8	19.7%	0	0.0	0.0%	0	0.0	0.0%
2023	30	1.0	16.8%	15	1.3	14.4%	14	0.9	23.0%	0	0.0	0.0%	1	0.5	11.1%

2022	27	0.9	14.5%	14	1.2	14.9%	11	0.7	14.3%	1	1.1	9.1%	1	0.6	25.0%
2021	26	0.8	14.5%	13	1.1	13.7%	11	0.7	15.5%	1	1.1	11.1%	1	0.6	25.0%
2020	28	0.9	16.4%	15	1.2	14.7%	13	0.8	21.3%	0	0.0	0.0%	0	0.0	0.0%

Note:

Counts and corresponding rates for an event size of less than 20 should be interpreted with caution;

Rate calculated as infant deaths per 1,000 live births within each specified race and condition tabulation

Percent (%) calculated as percentage of neonatal infant deaths within year

Neonatal Infant Deaths with Linked Selected Maternal Morbidity Characteristics

Table 13: 2024 Neonatal (28 days or less), rates of selected maternal morbidity in infant mortality by race/ethnicity

Maternal Characteristic	All		Black, NH		White, NH		Other, NH		Hispanic	
	Count	Rate	Count	Rate	Count	Rate	Count	Rate	Count	Rate
Gestational Hypertension	24	6.5	13	8.9	10	5.0	1	10.2	0	0.0
Gestational Diabetes	4	2.1	0	0.0	3	2.8	0	0.0	1	7.8
Eclampsia	3	33.7	0	0.0	2	60.6	1	333.3	0	0.0
Obesity	103	7.5	66	10.4	28	4.4	4	11.9	5	6.4
Previous Preterm Delivery	14	7.8	6	6.6	7	9.3	1	27.0	0	0.0
Syphilis	2	5.0	1	3.5	1	10.1	0	0.0	0	0.0
Total Infant Deaths	198	5.9	117	9.1	61	3.5	8	7.6	12	5.0

Note:

Counts and corresponding rates for an event size of less than 20 should be interpreted with caution;

Rate calculated as infant deaths per 1,000 live births within each specified race and condition tabulation

Table 14: 2024 Neonatal (28 days or less) deaths, percentages (%) of selected maternal morbidity in infant mortality by race/ethnicity

Maternal Characteristic	All		Black, NH		White, NH		Other, NH		Hispanic	
	Count	%	Count	%	Count	%	Count	%	Count	%
Gestational Hypertension	24	12.1%	13	11.1%	10	16.4%	1	12.5%	0	0.0%
Gestational Diabetes	4	2.0%	0	0.0%	3	4.9%	0	0.0%	1	8.3%
Eclampsia	3	1.5%	0	0.0%	2	3.3%	1	12.5%	0	0.0%
Obesity	103	52.0%	66	56.4%	28	45.9%	4	50.0%	5	41.7%
Previous Preterm Delivery	14	7.1%	6	5.1%	7	11.5%	1	12.5%	0	0.0%
Syphilis	2	1.0%	1	0.9%	1	1.6%	0	0.0%	0	0.0%
Total Infant Deaths	198	100.0%	117	100.0%	61	100.0%	8	100.0%	12	100.0%

Note:

Counts and corresponding rates for an event size of less than 20 should be interpreted with caution

Table 15: Neonatal (28 days or less at death), infant mortality by selected maternal morbidity characteristic at birth, 2020-2024

Year	All			Black, NH			White, NH			Other, NH			Hispanic		
	Count	Rate	%	Count	Rate	%	Count	Rate	%	Count	Rate	%	Count	Rate	%
Gestational hypertension															
2024	24	6.5	12.1%	13	8.9	11.1%	10	5.0	16.4%	1	10.2	12.5%	0	0.0	0.0%
2023	16	4.6	8.9%	7	4.7	6.7%	9	5.0	14.8%	0	0.0	0.0%	0	0.0	0.0%
2022	21	6.0	11.3%	12	8.4	12.8%	9	4.8	11.7%	0	0.0	0.0%	0	0.0	0.0%
2021	18	5.0	10.1%	9	6.1	9.5%	8	4.2	11.3%	0	0.0	0.0%	1	8.5	25.0%
2020	13	4.1	7.6%	9	6.6	8.8%	4	2.5	6.6%	0	0.0	0.0%	0	0.0	0.0%
Gestational diabetes															
2024	4	2.1	2.0%	0	0.0	0.0%	3	2.8	4.9%	0	0.0	0.0%	1	7.8	8.3%
2023	2	1.1	1.1%	1	1.8	1.0%	1	1.0	1.6%	0	0.0	0.0%	0	0.0	0.0%
2022	5	2.6	2.7%	3	4.8	3.2%	2	1.8	2.6%	0	0.0	0.0%	0	0.0	0.0%
2021	3	1.6	1.7%	3	4.7	3.2%	0	0.0	0.0%	0	0.0	0.0%	0	0.0	0.0%
2020	5	3.0	2.9%	5	8.5	4.9%	0	0.0	0.0%	0	0.0	0.0%	0	0.0	0.0%
Eclampsia															
2024	3	33.7	1.5%	0	0.0	0.0%	2	60.6	3.3%	1	333.3	12.5%	0	0.0	0.0%
2023	0	0.0	0.0%	0	0.0	0.0%	0	0.0	0.0%	0	0.0	0.0%	0	0.0	0.0%
2022	1	12.0	0.5%	0	0.0	0.0%	1	25.0	1.3%	0	0.0	0.0%	0	0.0	0.0%
2021	1	15.9	0.6%	1	27.8	1.1%	0	0.0	0.0%	0	0.0	0.0%	0	0.0	0.0%
2020	2	21.3	1.2%	1	21.7	1.0%	1	22.7	1.6%	0	0.0	0.0%	0	0.0	0.0%
Obesity															
2024	103	7.5	52.0%	66	10.4	56.4%	28	4.4	45.9%	4	11.9	50.0%	5	6.4	41.7%

2023	80	5.8	44.7%	51	7.5	49.0%	23	3.8	37.7%	3	8.9	60.0%	3	4.1	33.3%
2022	76	5.4	40.9%	41	6.1	43.6%	30	4.7	39.0%	5	14.7	45.5%	0	0.0	0.0%
2021	84	6.0	46.9%	55	8.0	57.9%	26	4.2	36.6%	2	6.8	22.2%	1	1.7	25.0%
2020	78	5.6	45.6%	53	7.5	52.0%	23	3.8	37.7%	1	3.5	25.0%	1	2.0	25.0%
Previous preterm delivery															
2024	14	7.8	7.1%	6	6.6	5.1%	7	9.3	11.5%	1	27.0	12.5%	0	0.0	0.0%
2023	18	12.6	10.1%	13	17.4	12.5%	5	8.8	8.2%	0	0.0	0.0%	0	0.0	0.0%
2022	17	11.4	9.1%	10	13.3	10.6%	5	7.9	6.5%	2	57.1	18.2%	0	0.0	0.0%
2021	23	14.9	12.8%	13	17.3	13.7%	8	11.6	11.3%	1	20.8	11.1%	1	17.2	25.0%
2020	7	4.5	4.1%	6	7.7	5.9%	1	1.5	1.6%	0	0.0	0.0%	0	0.0	0.0%
Syphilis															
2024	2	5.0	1.0%	1	3.5	0.9%	1	10.1	1.6%	0	0.0	0.0%	0	0.0	0.0%
2023	3	8.6	1.7%	2	8.1	1.9%	1	10.9	1.6%	0	0.0	0.0%	0	0.0	0.0%
2022	5	17.7	2.7%	2	10.1	2.1%	2	28.2	2.6%	1	166.7	9.1%	0	0.0	0.0%
2021	1	4.6	0.6%	1	6.1	1.1%	0	0.0	0.0%	0	0.0	0.0%	0	0.0	0.0%
2020	2	11.1	1.2%	1	7.6	1.0%	1	26.3	1.6%	0	0.0	0.0%	0	0.0	0.0%
Total Neonatal Infant Deaths															
2024	198	5.9	100.0%	117	9.1	100.0%	61	3.5	100.0%	8	7.6	100.0%	12	5.0	100.0%
2023	179	5.2	100.0%	104	7.5	100.0%	61	3.5	100.0%	5	4.6	100.0%	9	4.2	100.0%
2022	186	5.4	100.0%	94	6.7	100.0%	77	4.3	100.0%	11	10.9	100.0%	4	2.1	100.0%
2021	179	5.1	100.0%	95	6.5	100.0%	71	4.0	100.0%	9	9.3	100.0%	4	2.3	100.0%
2020	171	4.8	100.0%	102	6.7	100.0%	61	3.5	100.0%	4	4.0	100.0%	4	2.4	100.0%

Note:
Counts and corresponding rates for an event size of less than 20 should be interpreted with caution;
Rate calculated as infant deaths per 1,000 live births within each specified race and condition tabulation;
Percent (%) calculated as percentage of neonatal infant deaths within year