

WARREN COUNTY WEEKLY COVID-19 SNAPSHOT

WEEK ENDING AUGUST 21, 2021



Total Cases

5688

Total Deaths

134

Total Incidence

(cases per 100,000)

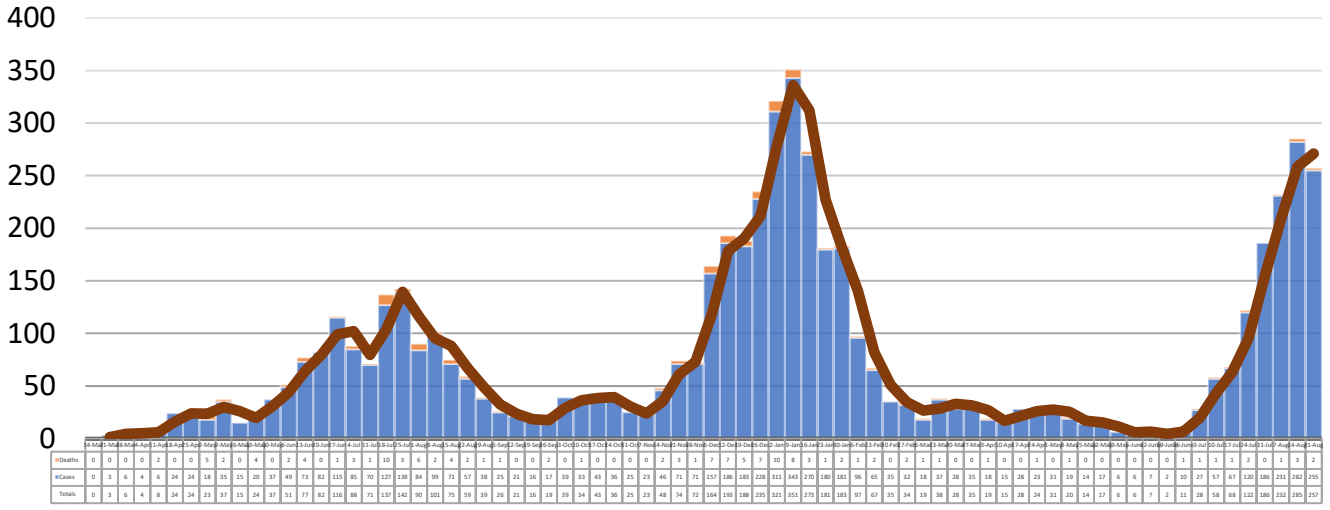
12533.9

*Test Positivity Rate

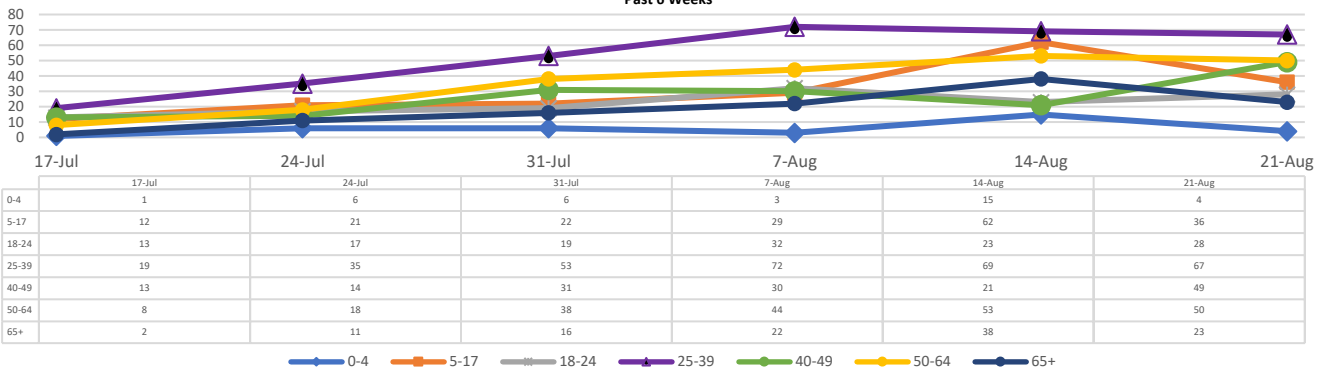
27.8%

(8/4-8/17)

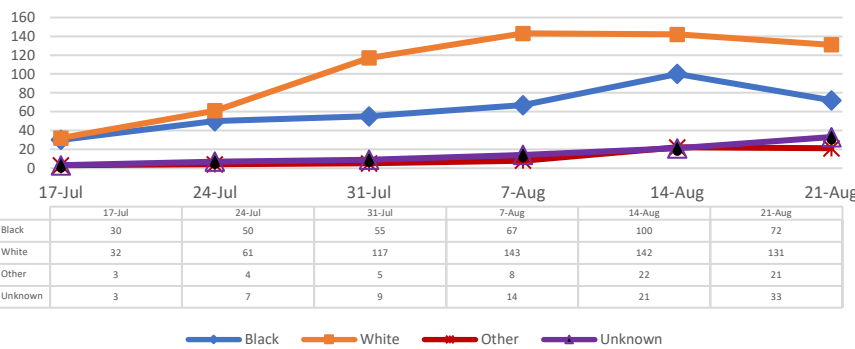
**Total Cases and Deaths, Through August 21, 2021



Total Cases, By Age Past 6 Weeks



Total Cases, By Race Past 6 Weeks



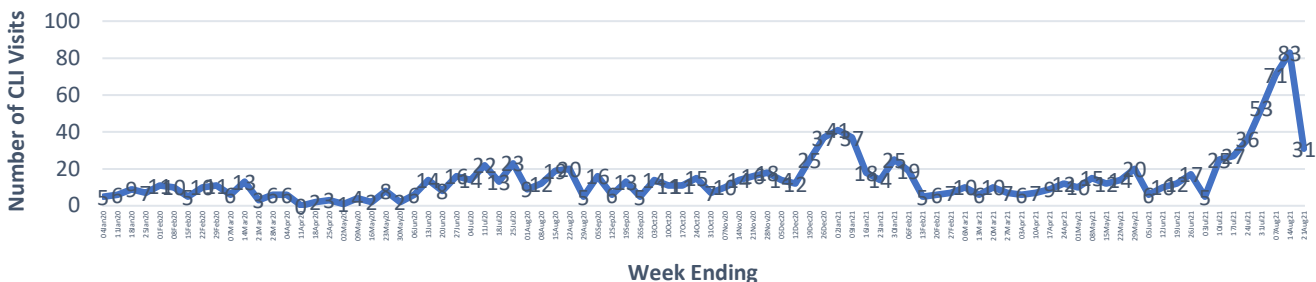
8/15/2021 – 8/21/2021

# Cases via Suspected Community Transmission	253
# Cases via Outbreaks	4

Outbreak Explanation

During the week of 8/15-8/21, three (3) cases/patients were associated with an outbreak in a Long-Term Care Facility (LTCF); one (1) case/patient was associated with an outbreak in a residential care facility.

COVID-19-Like Illness (CLI) Visits Warren County, Mississippi Jan. 04, 2020 - Aug. 21, 2021



*Counties with test percent positivity <5.0% or with <20 tests in past 14 days: Green; test percent positivity 5.0%-10.0% or with <500 tests and <2000 tests/100k and >10% positivity over 14 days: Yellow; >10.0% and not meeting the criteria for "Green" or "Yellow": Red. Test positivity is rounded to the nearest tenth of a percent before classifying. Reference: [Centers for Medicare and Medicaid Services](#)

**Provisional Data: Illnesses occurring during the last two weeks may not yet have been reported and/or represented.