

# Motor Vehicle Crash Deaths in Mississippi: Data, Risk Factors, and Prevention (2018-2022)

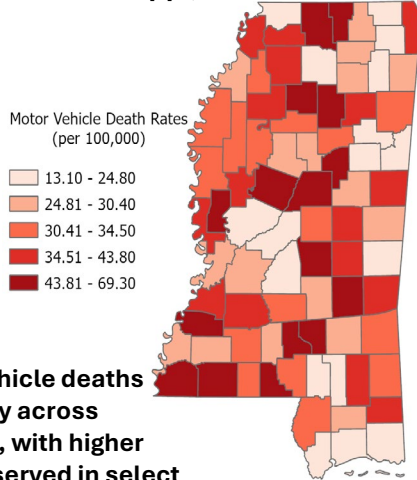


MISSISSIPPI  
STATE DEPARTMENT  
OF HEALTH

## Key Highlights:

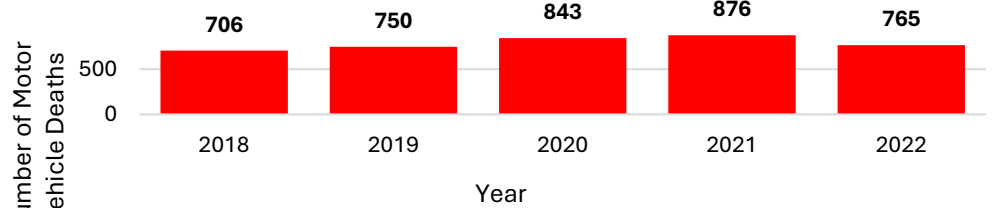
- Deaths increased from 2018 to 2021 from **706** to **876**.
- **Males** accounted for majority of deaths each year.
- **Ages 15-34** consistently showed the **highest** rates of death.

## Motor Vehicle Death Rate by County in Mississippi, 2018-2022



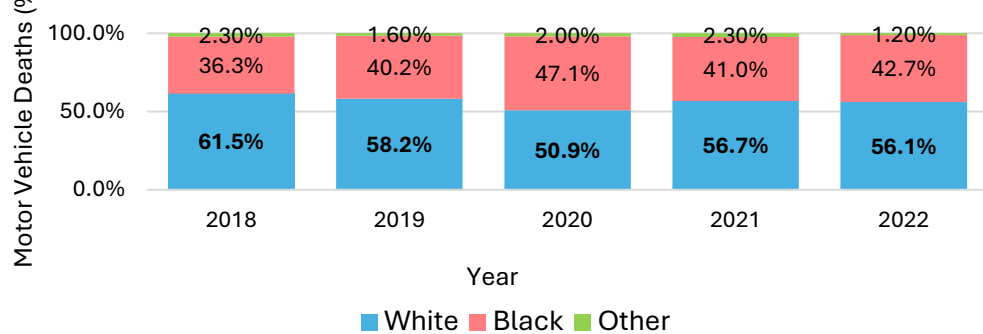
Motor vehicle deaths rates vary across counties, with higher rates observed in select regions.

## Motor Vehicle Deaths in Mississippi, 2018-2022



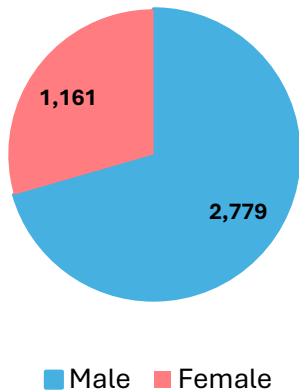
Motor vehicle deaths increased from 2018 to 2021 before declining in 2022.

## Motor Vehicle Deaths by Race in Mississippi, 2018-2022



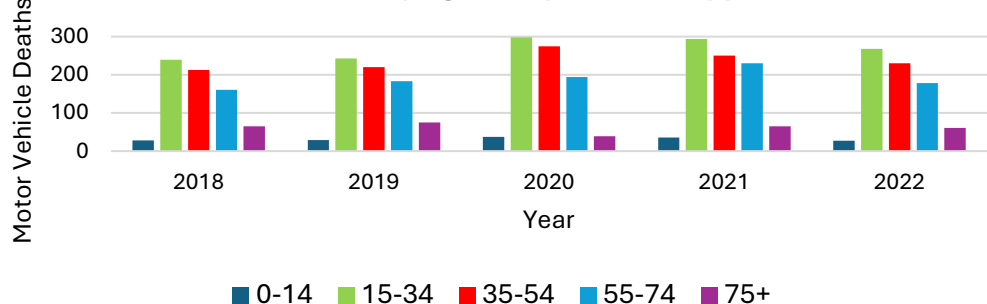
Whites accounted for the highest percentage of motor vehicle deaths each year.

## Motor Vehicle Deaths by Sex, 2018-2022



Males accounted for approximately 70% of motor vehicle deaths each year.

## Motor Vehicle Deaths by Age Group in Mississippi, 2018-2022



Motor vehicle deaths were highest among individuals aged 15-34.

## Risk Factors of Motor Vehicle Crashes:

- Distracted Driving
- Impaired Driving (alcohol and/or any other substances)
- Speeding

## Prevention Strategies:

- Use a seat belt on every trip
- Obey speed limits
- Know traffic laws
- Drive without distractions
- Do not drink and drive
- Make sure children have the appropriate car and booster seats

## Conclusion:

Motor vehicle deaths in Mississippi increased through 2021 before declining slightly in 2022. Males and young adults were most affected, with deaths concentrated among the White population and varying across counties. These patterns highlight the need for targeted prevention strategies to reduce fatalities.

## Data Sources:

1. [MSTAHRS - Mississippi Statistically Automated Health Resource System](#)
2. [Transportation Safety | CDC](#)