

## Infant Mortality: A Critical Public Health Priority

Mississippi's 2024 infant mortality rate has risen to 9.7 deaths per 1,000 live births, the highest in more than a decade, with 3,527 infant deaths since 2014. Major contributors include congenital anomalies, preterm birth, low birth weight, and SIDS. State Health Officer Dr. Dan Edney stresses that improving infant outcomes begins with strengthening maternal health through accessible prenatal and postpartum care, robust community support, and expanded resources for families.

To address this urgent public health priority, MSDH is implementing a comprehensive, statewide response, including:

- Activating the OB System of Care\* to better coordinate maternal and neonatal care
- Expanding prenatal services in targeted county health departments
- Providing safe-sleep portable cribs and education to reduce preventable sleep-related deaths
- Aligning partners and programs across Mississippi to prevent avoidable infant loss

### OB System of Care\*

The OB System of Care standardizes and regionalizes maternal and neonatal services to ensure that high-risk mothers and infants reach facilities equipped to deliver the appropriate level of care. This system directly addresses Mississippi-specific challenges such as long rural travel distances, limited NICU availability, EMS transport barriers, and inconsistent transfer pathways.

Through improved hospital level-of-care designations, stronger transfer processes, expanded prenatal access in underserved counties, and earlier engagement in pregnancy, the OB System of Care strengthens the entire continuum of maternal and infant health. With its launch, Mississippi becomes the only state in the nation with four implemented Systems of Care. STEMI (Heart Attack ), Stroke, and Trauma.



THE MISSISSIPPI STATE DEPARTMENT  
OF HEALTH'S MISSION IS TO

PROTECT  
&  
ADVANCE

THE HEALTH, WELL-BEING AND  
SAFETY OF EVERYONE IN MISSISSIPPI.

2025 PUBLIC HEALTH  
REPORT CARD



## OPIOID DEATHS

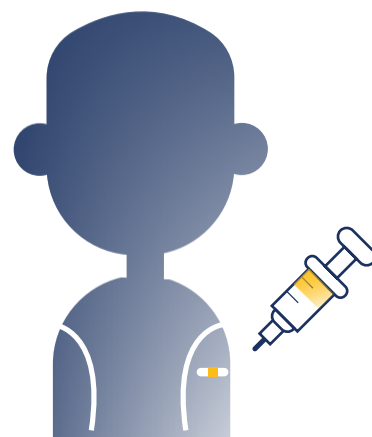
continue to decline

A total of **301** opioid-related deaths occurred in 2024 with Mississippi having the **10th lowest** opioid related overdose death rate in the nation.



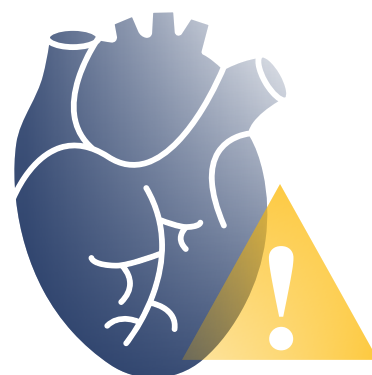
## WORST IN THE NATION IN FIREARM DEATHS

In 2024, a total of **810** firearm-related deaths occurred among Mississippi residents, placing Mississippi with the **highest** firearm-related mortality rate of all 50 states.



## VACCINATIONS: RANKED 3RD NATIONWIDE

Mississippi's 2024-2025 school-required vaccination rates are **greater than 97.66%**



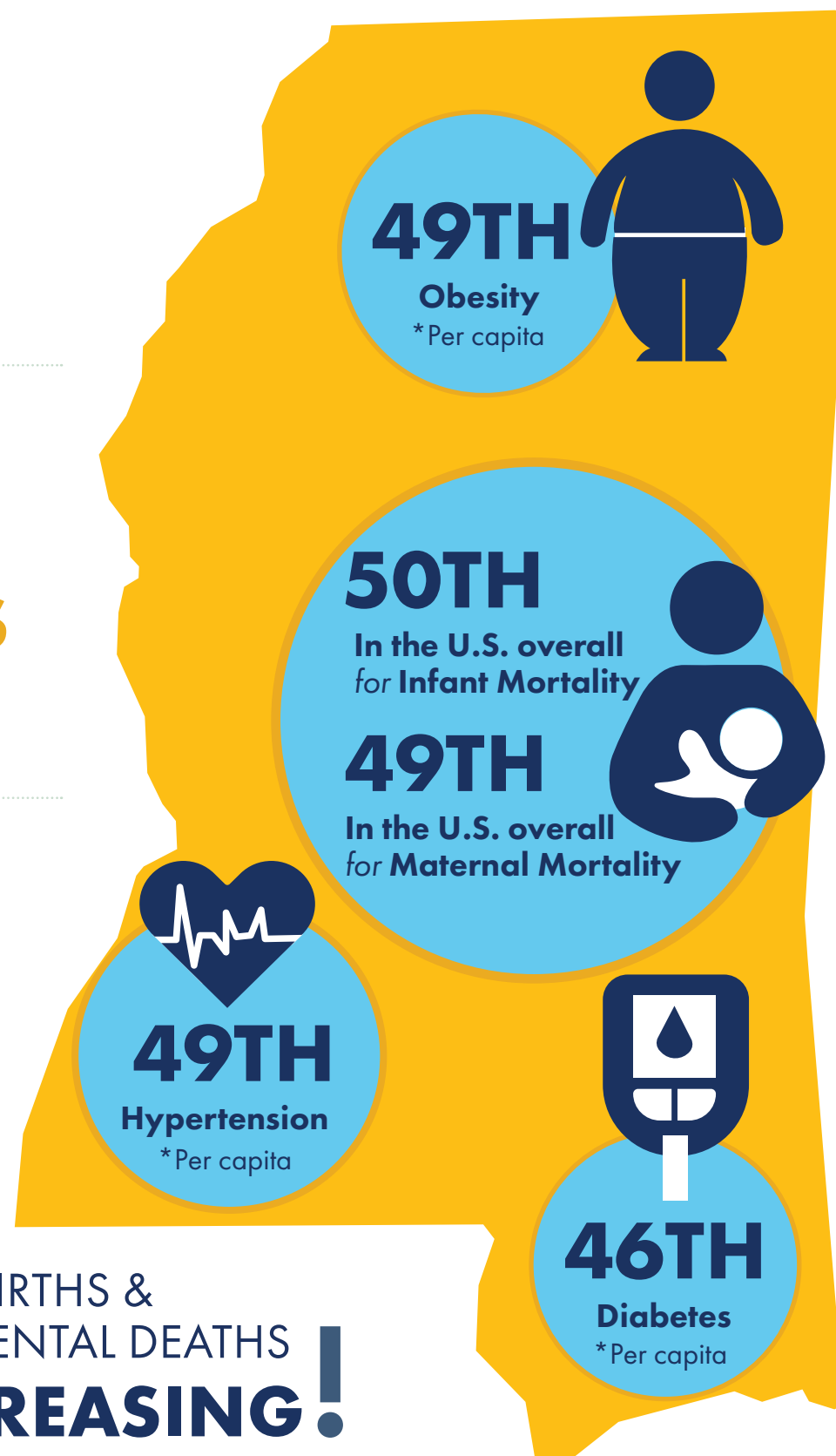
## #1 KILLER HEART DISEASE

**287.5 (2023) → 291.7 (2024)**

## TEEN BIRTHS & ACCIDENTAL DEATHS DECREASING!

Teen Births: **24.9 (2023) → 22.8 (2024)** per 1,000 females.  
Accidental Deaths: **81.4 (2023) → 74.2 (2024)** per 100,000.

**189,566** POTENTIAL YEARS OF LIFE LOST BEFORE AGE 75 DUE TO PREVENTABLE DEATHS.



## 2024 BIRTH AND DEATH TRENDS

MORE DEATHS THAN BIRTHS

Births

33,471

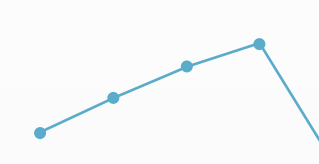
Deaths

35,245

## TB, HIV, AND SYPHILIS RATES



**TUBERCULOSIS** ↑  
Increasing  
1.4 (2023) → 1.7 (2024)  
per 100,000.



**HIV** ↓  
Decreasing  
21.3 (2023) → 15.5 (2024)  
per 100,000.



**SYPHILIS** ↓  
Decreasing  
30.1 (2023) → 21.3 (2024)  
per 100,000.



**CONGENITAL SYPHILIS** ↓  
Decreasing  
377.8 (2023) → 264.1 (2024)  
per 100,000.